



LD-1 Use Case:

SWAT

- Structure Approach
- Barricaded Subject
- Active Shooter

Armored Protection NIJ III / CEN B-6

- Lightweight, agile platform for soft terrain and spaces between structures.
- Both concealment and cover for operators.
- Full ballistic protection for final approach or delivery of less lethal munitions, drone/robot.



MADE
in the
USA

Indiana
MADE IN INDIANA



- Speed and maneuverability inside structures.
- Direct transport to the threat.
- Transit of personnel, equipment, and supplies during extended operations.
- Provide cover for evacuation of victims/personnel.

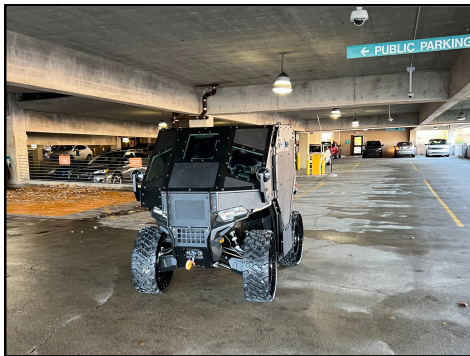
Reduce risk for operators

Reduce physical wear on personnel

LD-1 Use Cases / Scenarios

Perspective:

Captain, 22-year law enforcement officer with 13 years on SWAT.
Team commander of joint tactical team.



Scenario #1: Structure Approach

Current tactics – Initial approach with MRAP or Armored Personnel Carrier (APC) – extremely heavy and oversized. Perimeter, hasty, or QRF teams utilizing fences, trees, or vinyl/aluminum buildings as concealment with lack of cover. Final approach employing single ballistic shield to protect multiple operators.

Solution: The LD-1, which is well suited with its light weight and small platform, can be utilized to traverse soft terrain and small spaces between structures. It can be positioned in urban and rural environments to offer operators both cover and concealment allowing the final approach with full ballistic protection for team during window breaking, hostage rescue, apprehension, or less lethal munition or robot/drone deployment. The outcome is overall risk reduction to personnel.

Scenario #2: Barricaded Subject / Active Shooter

Current tactics – Operators clear structure on foot with ballistic vests.

Solution: The speed and maneuverability of the LD-1 matches the fluid and fast paced nature of an active shooter event. It offers direct transportation to the threat to engage the suspect with 360° ballistic protection for the operator.



Additional Scenarios: Transportation of personnel, equipment, and supplies during natural/manmade disasters, or extended operations to limit the exhaustion of operators. K-9 and suspect searches in diverse environments – between houses/buildings (urban), fields, creeks, or wooded (rural) areas. Ballistic capability in outdoor venues where there exists a risk for gunfire or objects thrown or used as weapons.

(463) 272-1476 | sales@tcburton.com

www.tcburton.com